



POLAROGRAPHY OF ZN (II)-TOLBUTAMIDE COMPLEX AND ITS PHARMACOLOGICAL STUDY

Rakesh Choure* and Neelam Vaidya

Department of Chemistry, Dr. Hari Singh Gour University, Sagar, M.P-470003, India

*Corresponding Author: Dr. Rakesh Choure, Department of Chemistry, Dr. Hari Singh Gour University, Sagar, M.P.470003

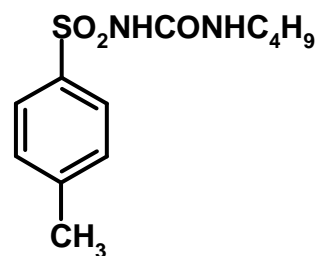
Received for publication: November 03, 2011; Accepted: January 11, 2012.

Abstract: The formation of complexes of tolbutamide and Zn (II) was studied in aqueous media at pH 3.4 ± 0.1 by polarography and spectroscopy. The polarogram indicated formation of complexes between tolbutamide and Zn (II). Tolbutamide produces a well-defined direct current polarogram and differential pulse polarogram in 1M KCl (supporting electrolyte) at pH 3.4 ± 0.1 . The stoichiometry of the Zn (II)-tolbutamide complex is 1:1. Antidiabetic studies on the drug and its metal complex have been performed in albino mice. Revealing the complex to be more potent in antidiabetic activity compared to the parent drug.

Keywords: Tolbutamide, DCP, DPP, glucometer, diabetic activity etc.

INTRODUCTION

Anti-diabetic drugs treat diabetes mellitus by lowering glucose levels in the blood. With the exceptions of insulin, exenatide, and pramlintide, all are administered orally and are thus also called oral hypoglycemic agents or oral antihyperglycemic agents. Sulfonylureas were discovered by the chemist Marcel Janbon and co-workers,[1] who were studying sulfonamide antibiotics and discovered that the compound sulfonylurea induced hypoglycemia in animals.⁽²⁾ Research has shown the Maitake mushroom (*Grifola frondosa*) has a hypoglycemic effect, and may be beneficial for the management of diabetes.[3-7] The reason Maitake lowers blood sugar is due to the fact the mushroom naturally acts as an alpha glucosidase inhibitor. Other mushrooms like Reishi,[8,9] *Agaricus blazei*,[10-13] *Agrocybe cylindracea*[14] and *Cordyceps* [15-19] have been reported to lower blood sugar levels to a certain extent, although the mechanism is currently unknown Walnut leaf can significantly reduce fasting blood glucose levels in rats with alloxan-induced diabetes, and rats thus treated show some evidence of regeneration of the beta cells [20] Garlic also significantly reduces fasting blood glucose levels in rats with alloxan-induced diabetes[21] Tolbutamide $C_{12}H_{18}N_2O_3S$, is a first generation potassium channel blocker, sulfonylurea oral hypoglycemic drug [22]. It is a white crystalline substance, used to augment insulin secretion in the treatment of diabetes mellitus [23, 24]. This drug may be used in the management of type II diabetes if diet alone is not effective. Tolbutamide stimulates the secretion of insulin by the pancreas [25]. Since the pancreas must synthesize insulin in order for this drug to work, it is not effective in the management of type I diabetes. It is not routinely used due to a higher incidence of adverse effects compared to newer second generation sulfonylureas [26], such as glyburide.



Tolbutamide

Experimental:

The entire chemical used was of Sigma Aldrich/BDH/CDH grade. Double distilled water was used to prepare all the solutions. Stock solution of 1M KCl and .01M Tolbutamide was prepared in double distilled water and ethanol (3:2 v/v).

Experimental sets were prepared by keeping overall metal ion and supporting electrolyte (Potassium Chloride) concentrations fixed at 1.0mM and 1.0M respectively. The pH value of experimental sets was adjusted to 3.4 ± 0.1 , using dil. HCl and sodium Hydroxide solution. The authentic sample solution of tolbutamide was of Sigma Aldrich laboratories chemical grade. Experimental set for the polarographic analysis of tolbutamide was prepared by taking (0.01M)1ml of sample solution and 10ml (1M) of KCl as supporting electrolyte in a polarographic cell and the total volume was made is 50ml with distilled water. The pH of the test solution was adjusted to 3.4 ± 0.1 .

Table: Formation Constant of Tolbutamide complexes

Complex	Stoichiometry	Formation Constant $\log \beta_1$
Zn-(II)- Tolbutamide	1:1	3.7

Table: Polarographic data on Zn (II)–Tolbutamide complex system

Concentration of	ligand	log Cx	E _{1/2}
0.0000		-	-0.99
0.0005		-3.301	-0.995
0.0010		-3.000	-1.0
0.0020		-2.698	-1.015
0.0030		-2.522	-1.021
0.0040		-2.397	-1.025

Zn(II)=1.0 mM, 0.2 M KCl supporting electrolyte pH= 3.4±0.1,

Polarogram of Zn (II) - Tolbutamide

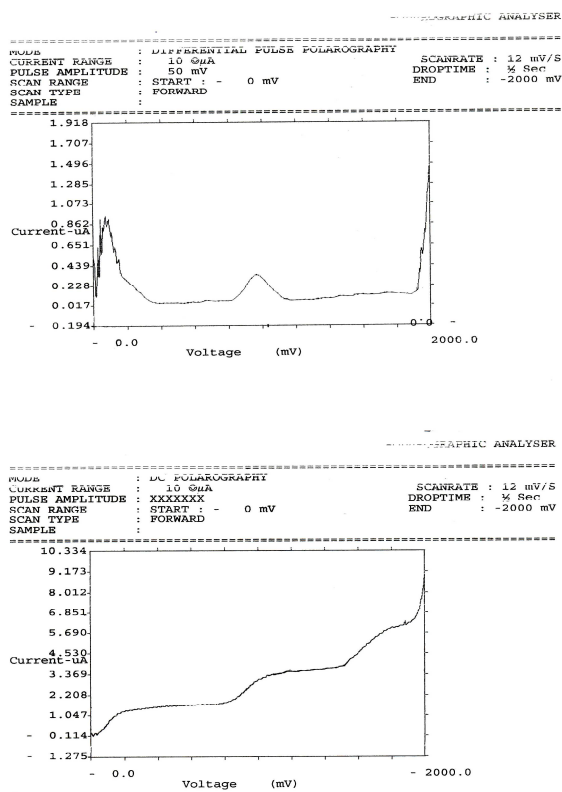


Fig: Direct current Polarogram and Differential pulse polarogram of Zn (II) - tolbutamide complex in KCl (0.2M) at pH 3.4±0.1.

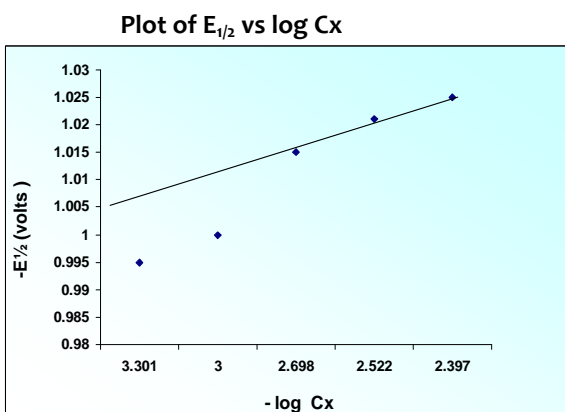


Fig: Zn (II) - Tolbutamide Complex system

Pharmacological Experiments:

The pharmacological data in the table shows that the initial blood sugar level is 220 mg/dl (after alloxan treatment) which on administration of the tolbutamide drug and its complex show a decrease with time.

The table shows that Zn (II)-tolbutamide complex is most effective of the complexes under study in bringing down the blood glucose level from 220 mg/dl to 82 mg/dl. Though, the complexes of tolbutamide under study are seen to be antidiabetic agents but Zn (II)-tolbutamide complex has been seen to be less effective in bringing down the glucose level as compared to the tolbutamide.

RESULTS AND DISCUSSION

Tolbutamide and its complexes gave well-defined cathodic reduction wave at pH = 3.4±0.02 in 0.2M KCl. The plots of *i_d* vs *v_{h,corr}* yielded straight lines in each case, passing through the origin confirming the diffusion controlled nature of the reduction process.

Effect of ligand concentration:-

On increasing the ligand concentration in each set and subjecting these experimental sets to polarography. It was observed that the half wave potential shifted to more electronegative value. The plot of change in half wave potential with logarithm of change in ligand concentration yielded a straight line, suggesting the formation of single complex specie in case of Zn (II)-Tolbutamide system.

IR spectral analysis of Fe (II)-Tolbutamide Complex

On comparison of the IR spectra of tolbutamide and its complex with titled metal. It was observe that the bands at 3260 cm⁻¹ to 3260 cm⁻¹ which were observed in the spectrum of the drug have either completely disappeared or have shifted to a lower frequency side in case of Zn(II) complex beside two new bands have appeared at 3510 cm⁻¹ and 3360 cm⁻¹ group in the spectrum of Zn(II)-tolbutamide complex indicating the involvement of -NH nitrogen in the complex formation, which is also confirmed by the shifting of band due to amide group at 1660cm⁻¹ in the spectrum of pure drug to 1700cm⁻¹ in the spectra of Zn(II) complex respectively.

The analytical data of tolbutamide complexes under study and the results of the polarographic study suggest metal to tolbutamide ratio of 1:1. Thus a tentative structure to the metal: Ligand complex may be given as under.

Table: Blood Glucose levels of diabetic albino rats after administration of Tolbutamide and its Zn (II) complexes

S. No.	Time interval (hrs.)	Initial blood glucose level (mg/dl)	Parent drug blood glucose level (mg/dl)	Zn(II)-Tolbutamide Complex with blood glucose level (mg/dl)
1.	0	220	220	220
2.	2	-	210	201
3.	4	-	190	174
4.	6	-	140	122
5.	8	-	136	104
6.	10	-	101	90
7.	12	-	96	84
8.	14	-	-	82

Amount of Tolbutamide and its complex (Zn (II) - tolbutamide), which were given orally to albino rats = 0.036gm/100 gm

CONCLUSION

The data show stoichiometric ratio of 1:1 for the Zn (II) Tolbutamide complex. The polarographic method is used for qualitative and quantitative analysis of tolbutamide and is recommended for quality control in the drug industry. The increased potency of the complex may allow use as a potent antidiabetic drug.

REFERENCES

- Janbon M, Chaptal J, Vedel A, Schaap J, Accidents hypoglycémiques graves par un sulfamidothiodiazol (le VK 57 ou 2254 RP), Montpellier Med., 1942, 44:21-22.
- Patlak, M., New Weapons to Combat an Ancient Disease: Treating Diabetes, FASEB J., 2002, 16:1853.
- Konno, Tortorelis, D. G., Fullerton, S. A., Samadi, A. A., Hettiarachchi, J., Tazaki, H., A possible hypoglycaemic effect of maitake mushroom on Type 2 diabetic patients, Diabetic medicine: a journal of the British Diabetic Association, 2001, 18(12): 1010.
- Hong, Xun, M., Wutong, W., Anti-diabetic effect of an alpha-glucan from fruit body of maitake (*Grifola frondosa*) on KK-Ay mice, The Journal of pharmacy and pharmacology, 2007, 59 (4): 575-82.
- Kubo, Aoki, H., Nanba, H., Anti-diabetic activity present in the fruit body of *Grifola frondosa* (Maitake). I, Biological & pharmaceutical bulletin, 1994, 17 (8): 1106-10.
- Manohar, Talpur, NA., Echard BW, Lieberman, S., Preuss HG, Effects of a water-soluble extract of maitake mushroom on circulating glucose/insulin concentrations in KK mice, Diabetes, obesity & metabolism, 2002, 4 (1): 43-8.
- Horio, Ohtsuru, M., Maitake (*Grifola frondosa*) improve glucose tolerance of experimental diabetic rats, Journal of nutritional science and vitaminology, 2001, 47(1): 57-63.
- Zhang, Lin, ZB., Hypoglycemic effect of *Ganoderma lucidum* polysaccharides. Acta pharmacologica Sinica, 2004, 25 (2): 191-5.
- Yang, Jung, YS, Song, CH., Hypoglycemic effects of *Ganoderma applanatum* and *Collybia confluens* exo-polymers in streptozotocin-induced diabetic rats, Phytotherapy research: PTR, 2007, 21 (11): 1066-9.
- Liu, Fukuwatari, Y., Okumura, K., Takeda, K., Ishibashi, KI., Furukawa, M., Ohno, N., Mori, K. et al., Immunomodulating Activity of *Agaricus brasiliensis* KA21 in Mice and in Human Volunteers, Evidence-based complementary and alternative medicine, 2008, 5(2): 205-219.
- Kim, Kim, KH, Choi, HJ, Lee, DS., Anti-diabetic activity of beta-glucans and their enzymatically hydrolyzed oligosaccharides from *Agaricus blazei*, Biotechnology letters, 2005, 27 (7): 483-7.
- Hsu, Liao, YL, Lin, SC., Hwang, KC, Chou, P., The mushroom *Agaricus Blazei* Murill in combination with metformin and gliclazide improves insulin resistance in type 2 diabetes: a randomized, double-blinded, and placebo-controlled clinical trial, Journal of alternative and complementary medicine, New York, N.Y., 2007, 13 (1): 97-102.
- Fortes, Novaes, MR., Recôva, VL, Melo, AL., Immunological, hematological, and glycemia effects of dietary supplementation with *Agaricus sylvaticus* on patients' colorectal cancer, Experimental biology and medicine, (Maywood, N.J., 2009, 234 (1): 53-62.
- Kiho, Sobue, S., Ukai, S., Structural features and hypoglycemic activities of two polysaccharides from a hot-water extract of *Agrocybe cylindracea*, Carbohydrate research, 1994, 251: 81-7.
- Kiho, Hui, J., Yamane, A., Ukai, S., Polysaccharides in fungi. XXXII. Hypoglycemic activity and chemical properties of a polysaccharide from the cultural mycelium of *Cordyceps sinensis*, Biological & pharmaceutical bulletin, 1993, 16(12): 1291-3.
- Kiho, Yamane, A., Hui, J., Usui, S., Ukai, S., Polysaccharides in fungi. XXXVI. Hypoglycemic activity of a polysaccharide (CS-F30) from the cultural mycelium of *Cordyceps sinensis* and its effect on glucose metabolism in mouse liver, Biological & pharmaceutical bulletin, 1996, 19(2): 294-6.
- Zhao, Yin. WT, Wang, J. Y., Zhang, Y., Yu, H., Cooper, R., Smidt, C., Zhu, JS., CordyMax Cs-4 improves glucose metabolism and increases insulin sensitivity in normal rats, Journal of alternative and complementary medicine, New York, N.Y., 2002, 8(3): 309-14.
- Lo, Tu, S. T., Lin, K. C., Lin, S. C., The anti-hyperglycemic activity of the fruiting body of *Cordyceps* in diabetic rats induced by nicotinamide and streptozotocin, Life Sciences, 2004, 74 (23): 2897-908.
- Zhang, Li., Zeng, G. H., Huang, Q., Wang, Z. G., Y. T., Dong, T. T., Tsim, K. W., Hypoglycemic activity of polysaccharide, with antioxidation, isolated from cultured *Cordyceps* mycelia, Phytomedicine: international journal of phytotherapy and phytopharmacology 2006, 13 (6): 428-33.
- Jelodar, G., Sirus, Sh., Mohsen, M., Effect of Walnut leaf, coriander and pomegranate on blood glucose and histopathology of pancreas of alloxan induced diabetic rats, African Journal of Traditional, Complimentary and Alternative Medicines, 2007, 4 (3): 299-305.
- Jelodar, Maleki, M., Motadayen MH, Sirus, S., Effect of fenugreek, onion and garlic on blood glucose and histopathology of pancreas of alloxan-induced diabetic rats, Indian journal of medical sciences, 2005, 59 (2): 64-9.
- Ken-ichi., Takeuchi, Changes in Temperature Preferences and Energy Homeostasis in Dystroglycan Mutants, Science, 2009, 323 (5922), 1740-1743.

23. Jeremy A, Greene, Prescribing by Numbers: Drugs and the Definition of Disease, Johns Hopkins University Press: Baltimore, MD. 2007.
24. American Diabetes Association, Standards of Medical Care in Diabetes Mellitus -- 2009, Diabetes Care, 2009, 32(1):13-61.
25. William, L., Lawrence, Science in Review: Drug for the Treatment of Diabetes Tested and Found of Great Importance, New York Times February, 1957, 24.
26. Garratt, KN., Brady, P. A., Hassinger, N. L. et al. Sulfonylurea Drugs Increase Early Mortality in Patients With Diabetes Mellitus After Direct Angioplasty for Acute Myocardial Infarction, J Am Coll Cardiol, 1999, 33(1):119-24.

Source of support: Nil

Conflict of interest: None Declared